

Menti Poll

What is your favorite dish to bring to potlucks?

Bonus points if you share your recipe with us! 😊

Cookout with



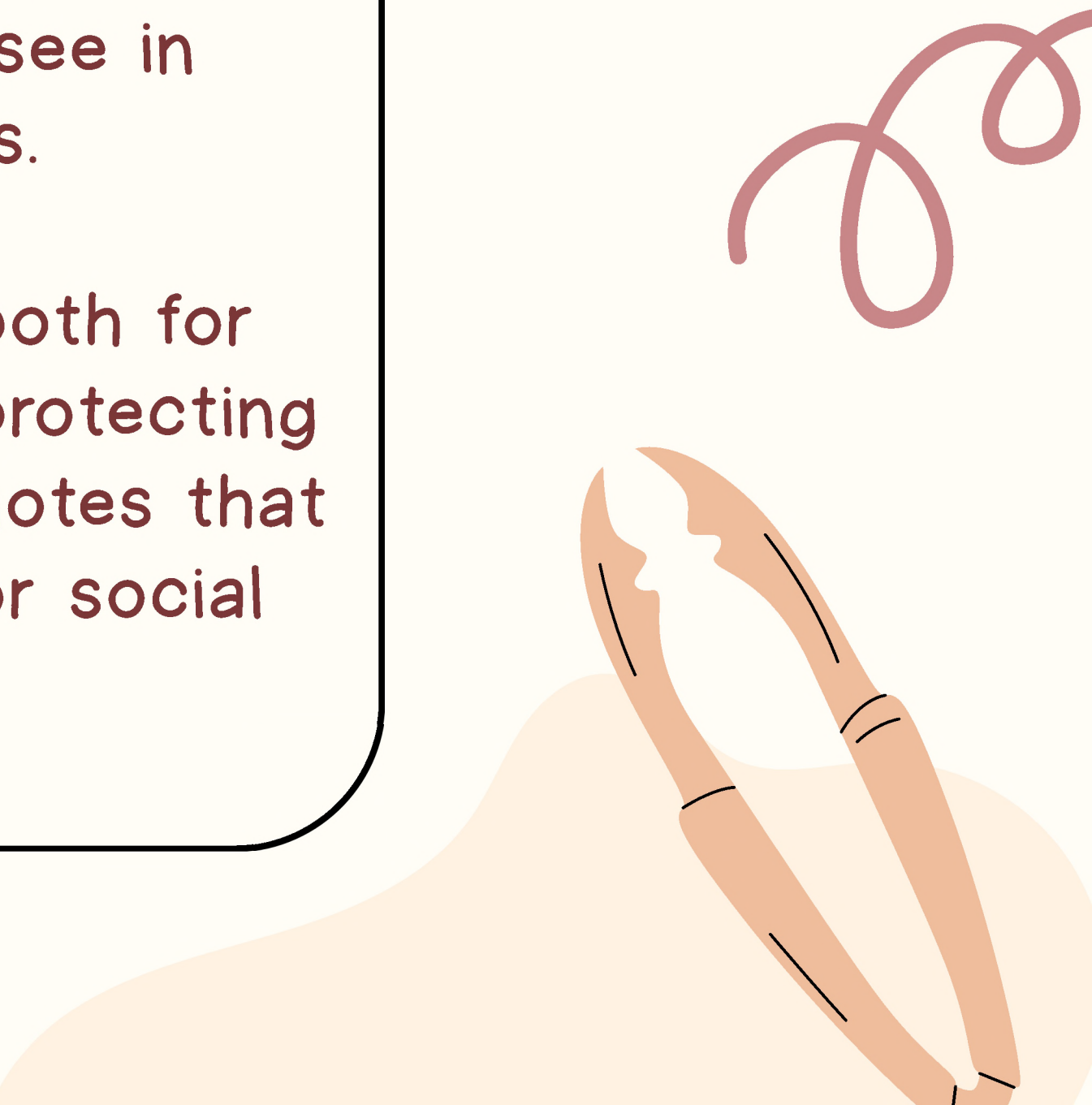
Documentation with Dignity: Writing Notes that Don't Harm



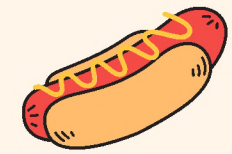
Welcome Navigators!

Today is about real talk on documentation—
not the sanitized “how-to” you see in
professional training manuals.

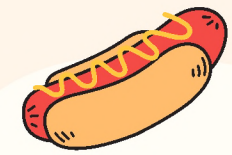
We’ll cover power, bias, and risk both for
families and helpers. This is about protecting
dignity, reducing harm, and writing notes that
don’t unintentionally create legal or social
consequences.



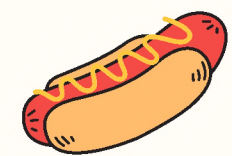
Navigating the Session



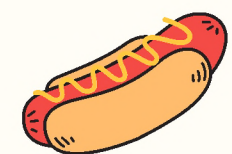
Active participation – use the chat, Zoom reactions, raise hand



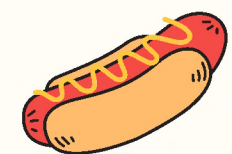
Be present – stay on camera if at all possible, we want to see you all here!



Stay open and curious and respect confidentiality – let's keep this a safe space to learn and grow together



Use technology respectfully– please mute yourself when not speaking

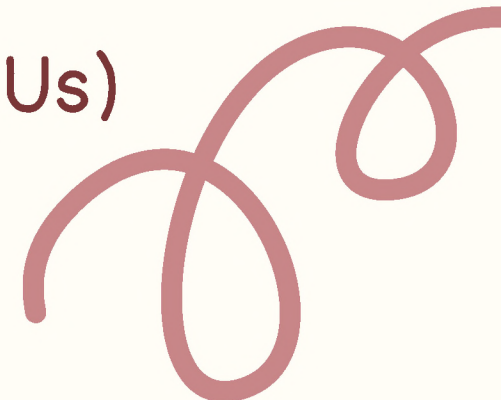


Have fun– let's keep this a supportive environment, while we stay focused on goals for the session

Where and How Documentation Happens



- Medical histories and now unmet social needs at healthcare visits
 - Centers for Medicaid and Medicare Services now requires hospitals to screen for transportation and utilities needs, food insecurity, unstable housing, and family violence
 - Often housed in electronic medical records systems
- Therapists and other behavioral health providers' screening/assessment data and notes
- Insurance claims
- DCBS TWIST case management database
- KY CourtNet
- Pretrial booking interview database
- Jail tracker programs (eJails, Jail Tracker, etc.)
- Charity Tracker and referral management systems (kynect resources, Unite Us)
- School records
 - Sometimes these systems are linked but mostly not in KY



Menti Poll

How does your work as a helper involve documentation (choose all that apply)?

- I contribute to documentation (write notes, update client data)
- I review other people's documentation (read case reports, pull and analyze data)
- I manage documentation data (train people on data entry, maintain electronic records infrastructure and access)

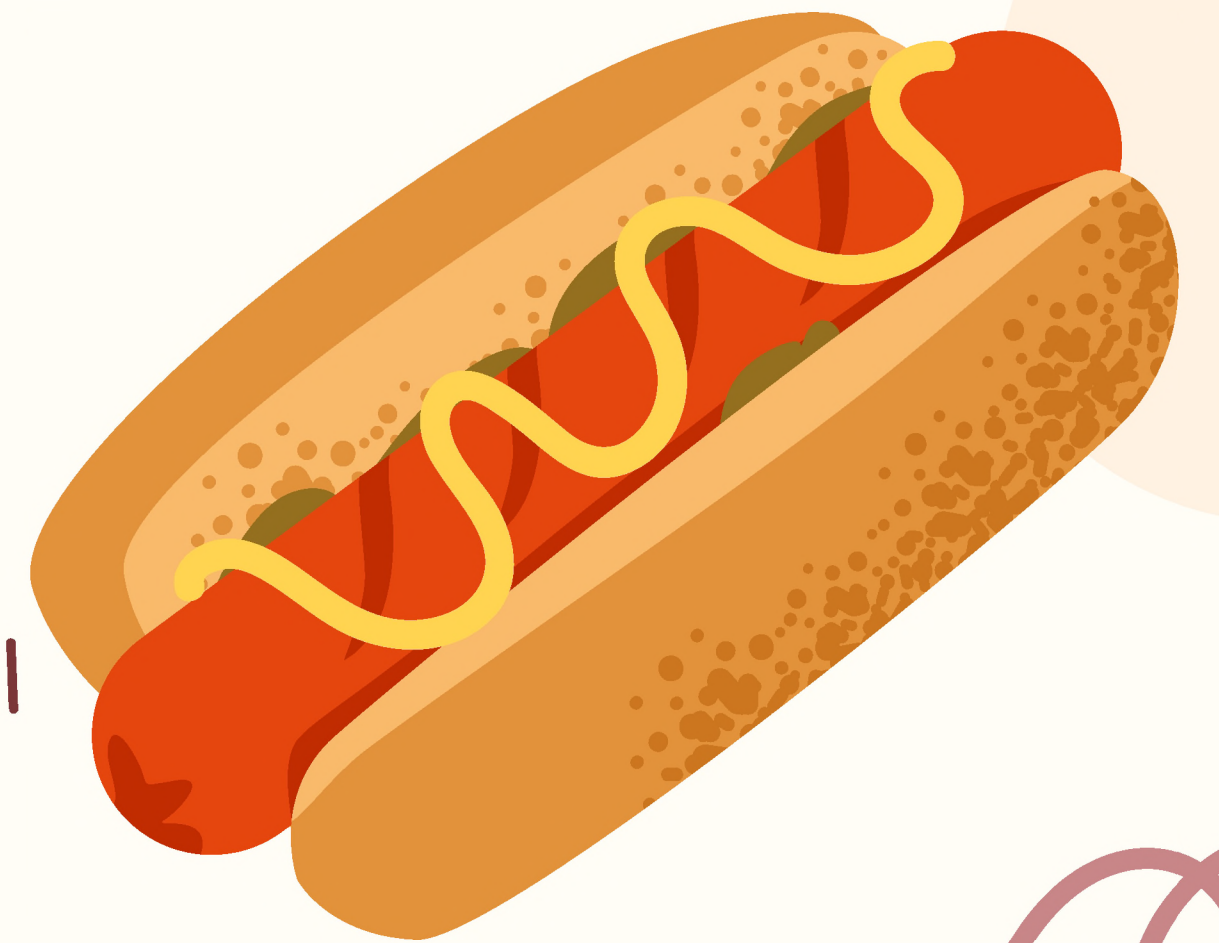
Why Documentation Matters: What's at Stake

- Notes are permanent records, can be viewed as "evidence."
- They can protect families or contribute to harm.
- Labels carry stigma and influence outcomes: education, legal involvement, child custody.
- Notes influence real-world interventions and judgments.



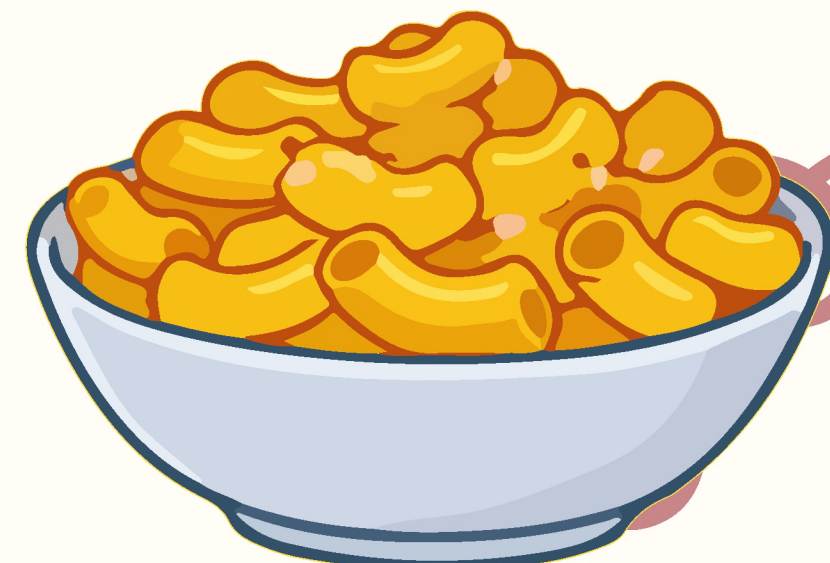
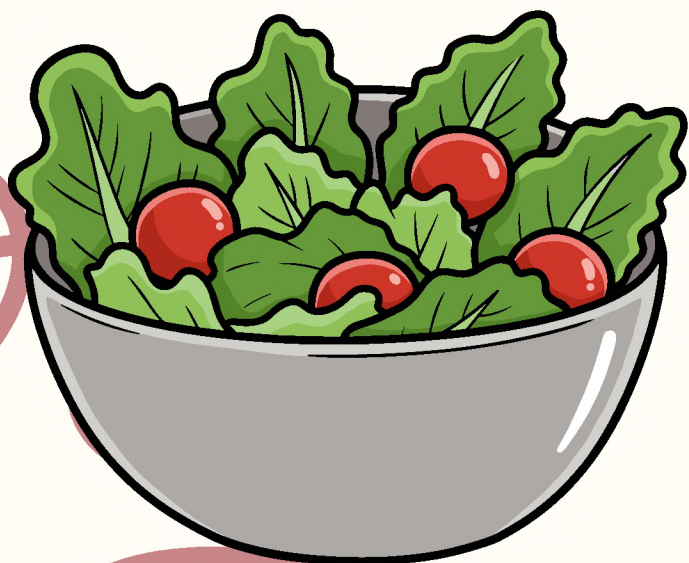
Power & Bias in Documentation

- Notes are interpreted by systems, not just humans.
- Professionals often work in silos—one perspective can dominate.
- Implicit bias affects what is considered “normal” or “concerning.”
- Intersectionality matters: race, class, mental health, disability, gender all influence perception.



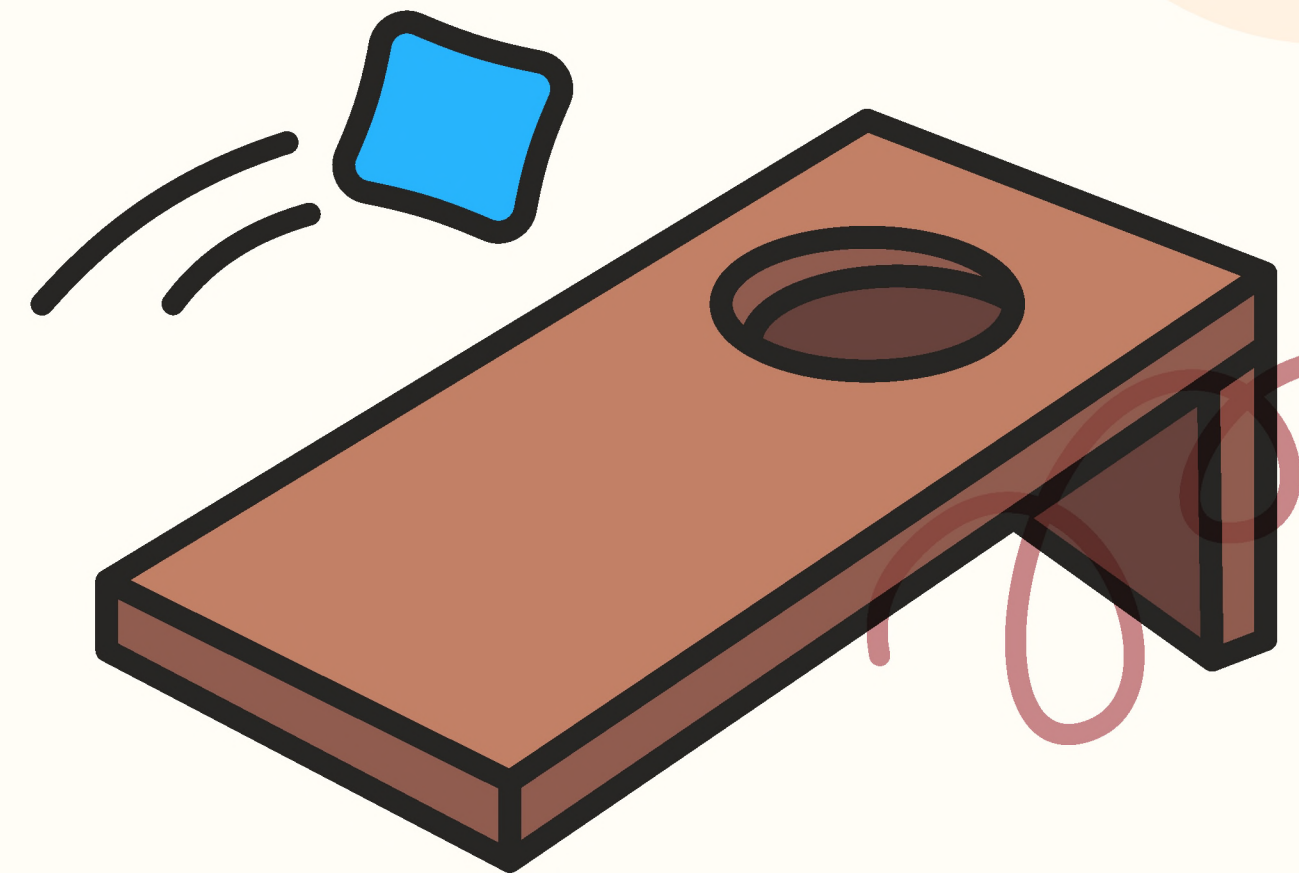
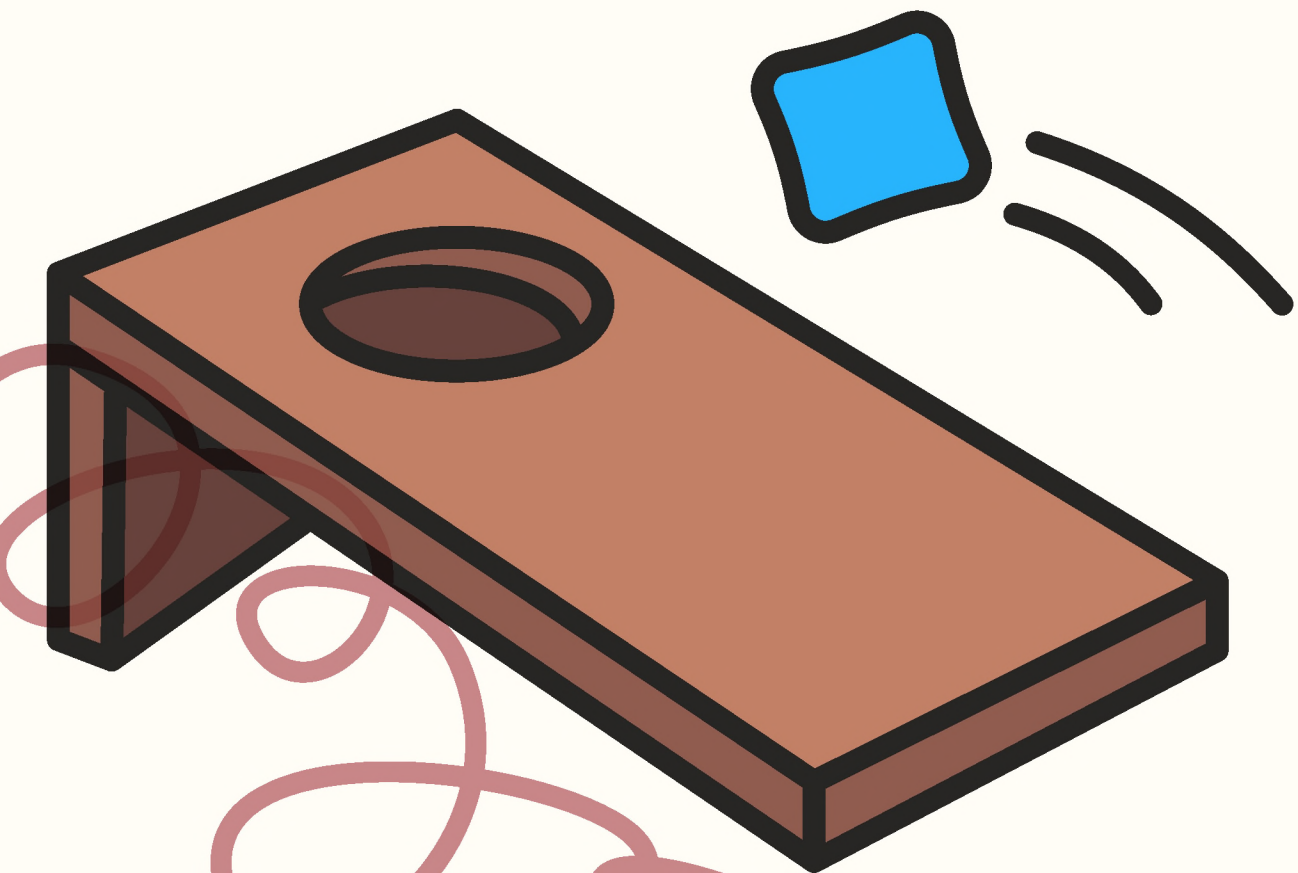
Principles of Dignity–Focused Documentation

- Include context: stressors, systemic barriers, family strengths.
- Avoid speculation—if it's unconfirmed, label it as such.
- Use neutral, descriptive language: "observed," "reported," "engaged," "attempted."
- Avoid judgmental terms: inadequate, unable, difficult, noncompliant.
- Record strengths and efforts alongside challenges.
- Always consider: "Could this be read in a courtroom?"



Balancing Professional Obligations & Dignity

- Know your reporting requirements, but don't over-document speculation.
- Protect families where possible without violating laws or ethical standards.
- Seek peer supervision for tricky documentation decisions.
- Reflect: "Am I documenting what I observed or what I fear?"



Real-World Example: Behavioral Challenge

Scenario: Child with ODD label often defiant in class.

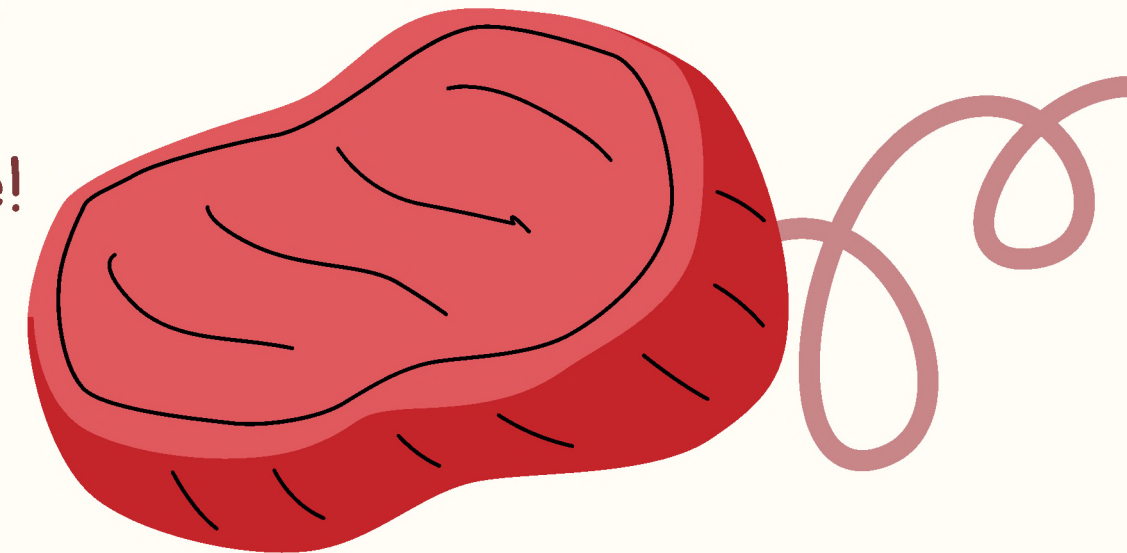
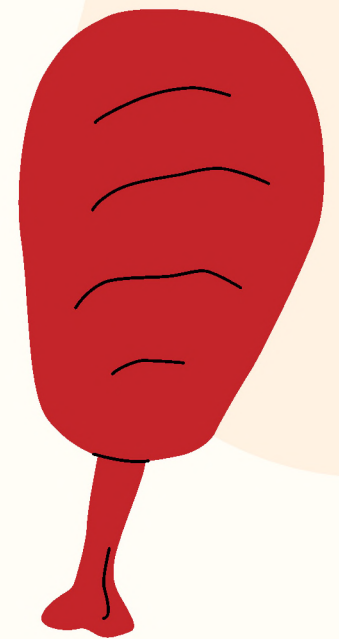
Before:

- "Child is defiant and refuses to follow instructions; disruptive behavior continues despite interventions."

After (Dignity-focused):

- "Child reports frustration with classroom tasks; teacher observed child verbalizing anger and walking away from task. Child participates in group activities at other times. Teacher and parent provided strategies for regulation. Observed triggers include transitions and noise."

Now, we will go into breakout rooms to work another example!



Breakout Room

Scenario: Parent overwhelmed with newborn.

Before: "Parent is unable to care for child; appears stressed and unprepared."

Menti Poll

What did you learn from your breakout?

How did you change the "before" language, and what examples did your peers share?

Key Takeaways

- Documentation is powerful—it can protect or harm.
- Bias, labels, and assumptions shape interpretation.
- Describe behaviors, context, and supports; avoid speculation.
- Think about how your notes might be read and acted upon.



Cook-off themed review game & notebook



Menti Poll

Next topic voting.

Next Session

January 28

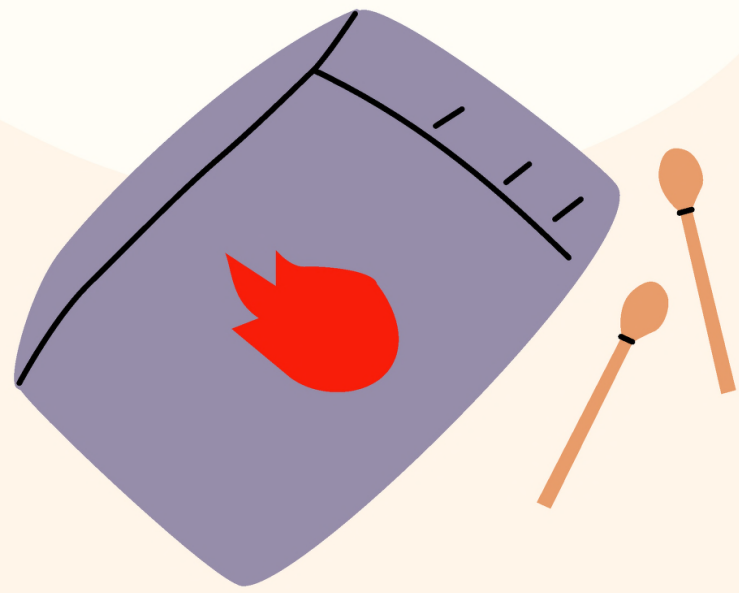


PEER REENTRY GROUP

Interested in joining our reentry specific workgroup?

Scan and complete the survey below!





Burning Questions?



Margaret McGladrey, PhD

✉ margaret.mcgladrey@uky.edu

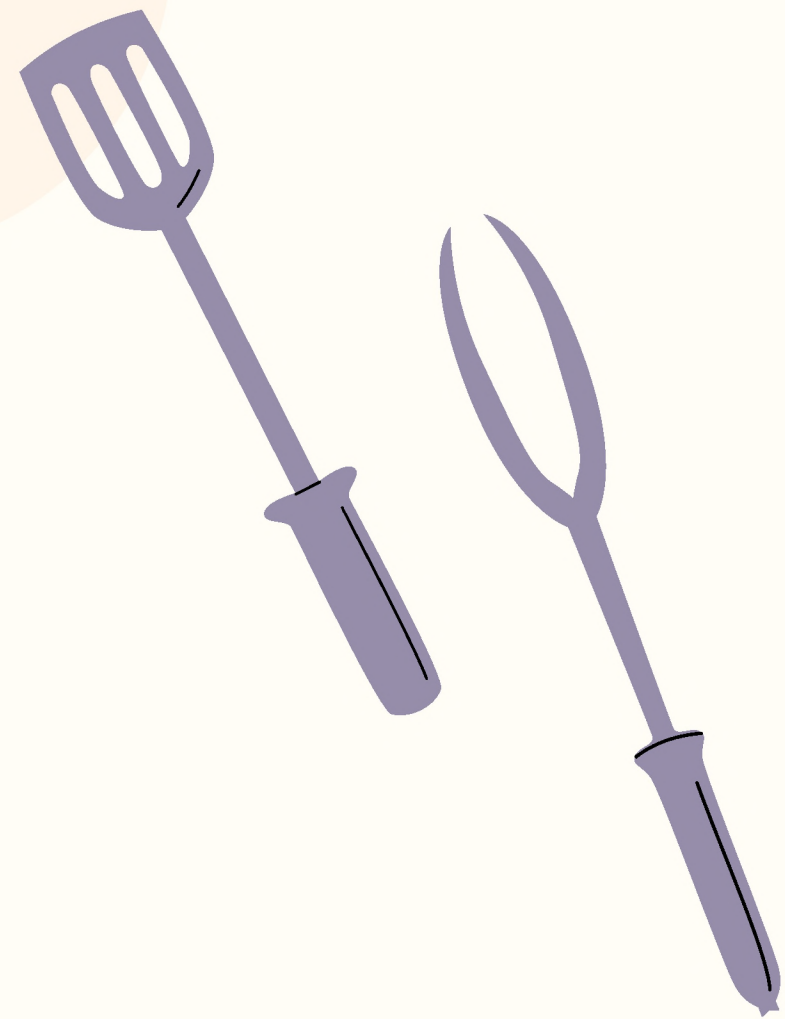


Valerie Frost, MAED

✉ valeriejfrost@gmail.com

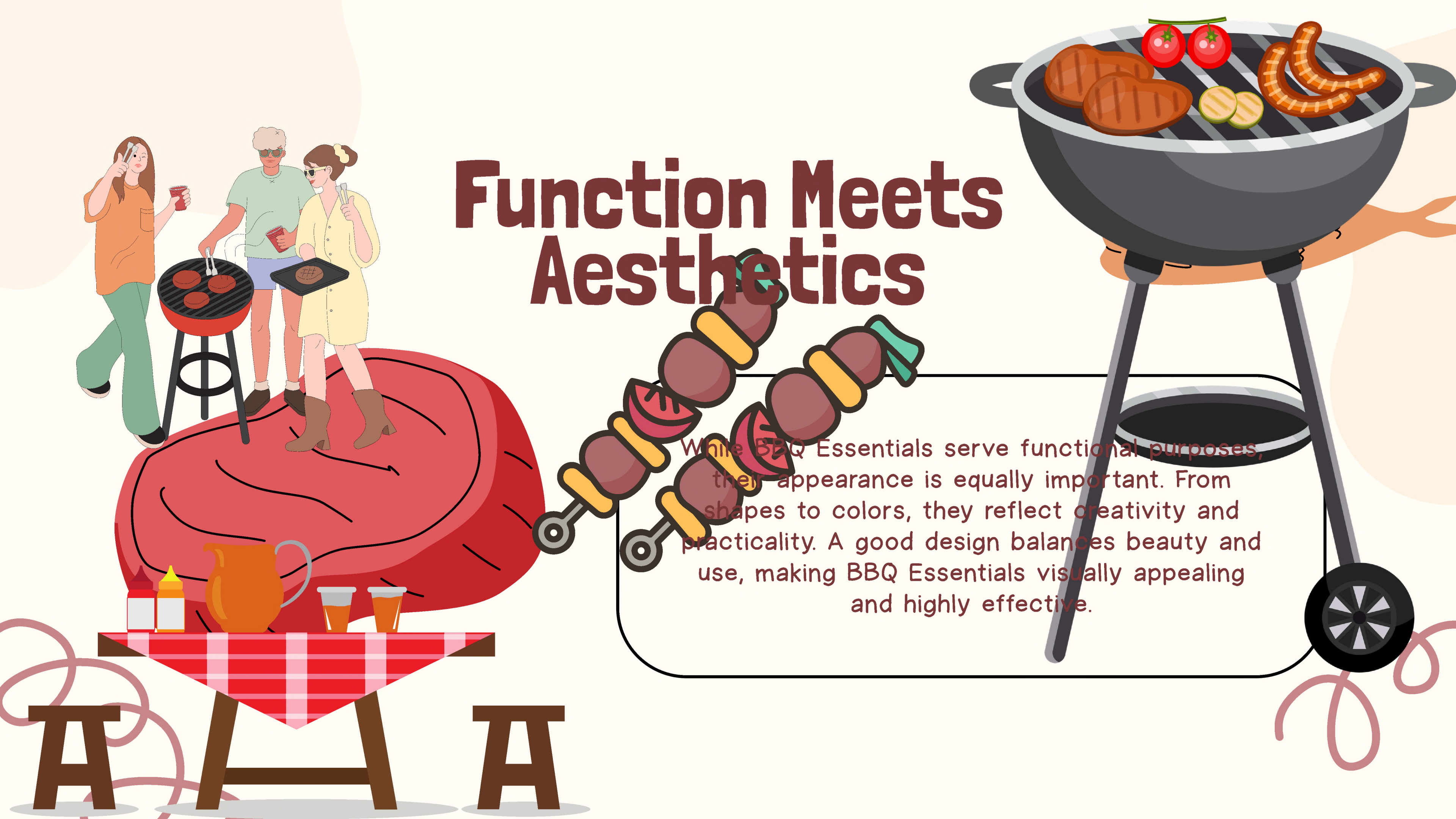


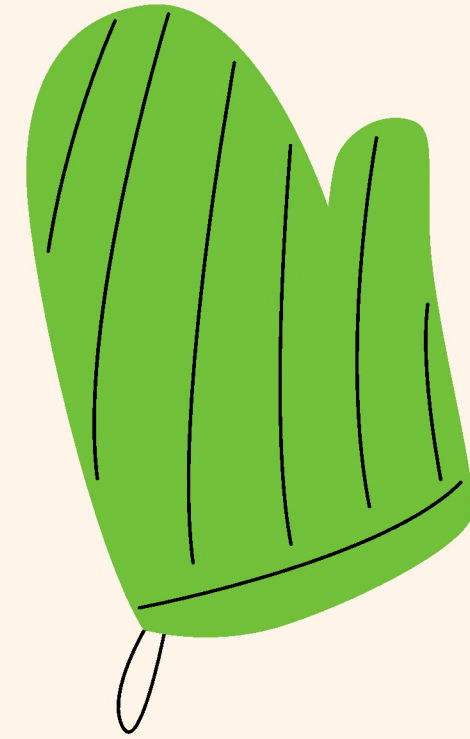
THANK YOU!



Function Meets Aesthetics

While BBQ Essentials serve functional purposes, their appearance is equally important. From shapes to colors, they reflect creativity and practicality. A good design balances beauty and use, making BBQ Essentials visually appealing and highly effective.





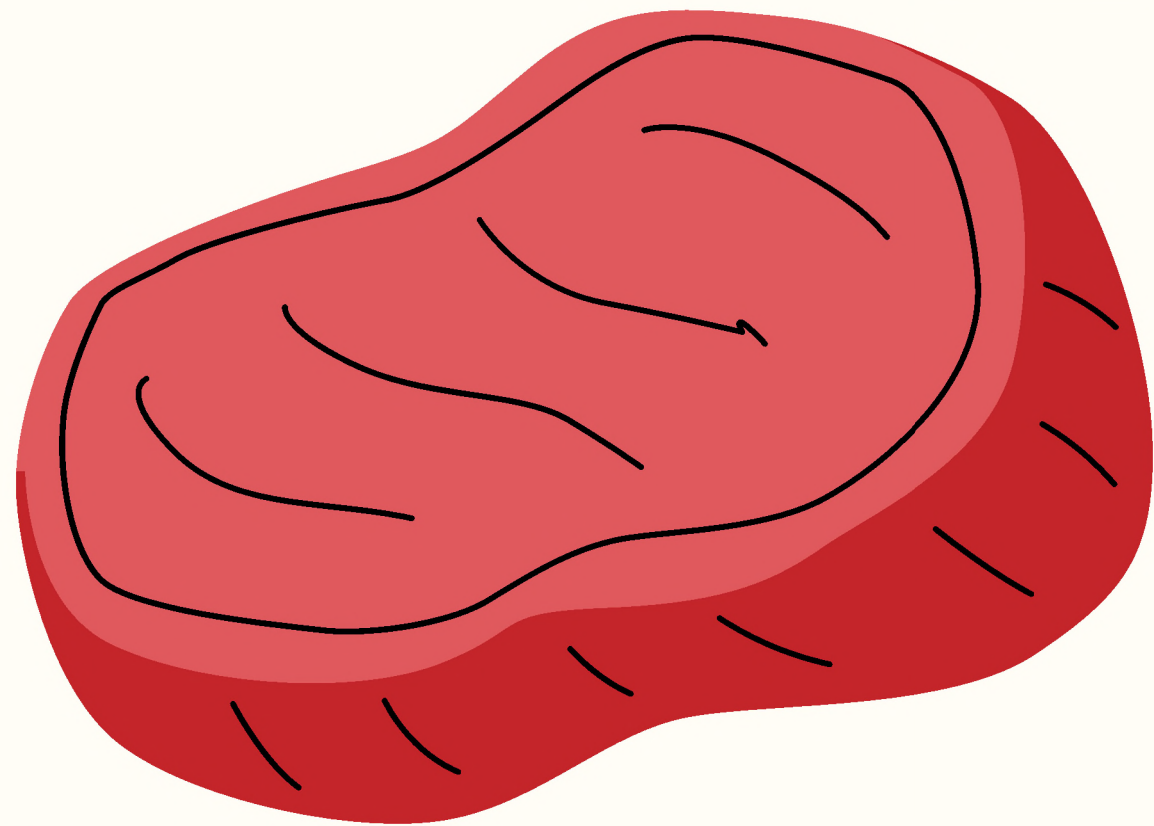
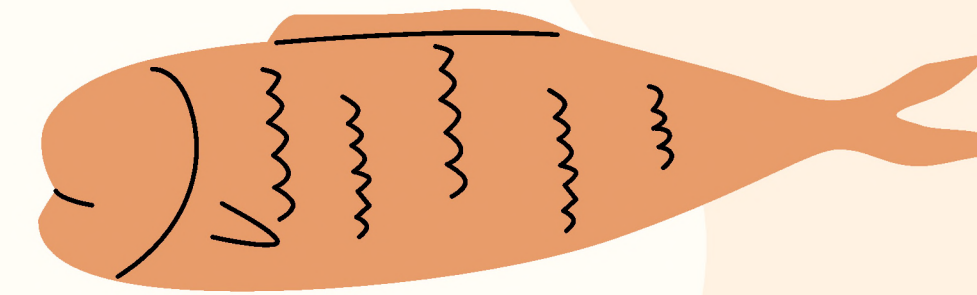
BBQ Essentials



Exploring the World of BBQ Essentials



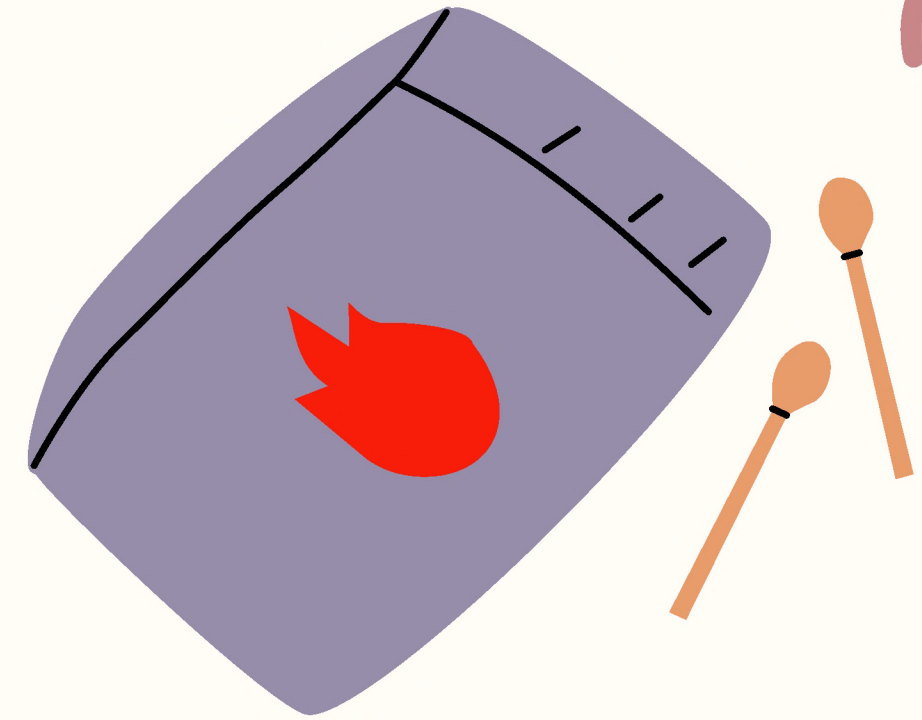
Function Meets Aesthetics



While BBQ Essentials serve functional purposes, their appearance is equally important. From shapes to colors, they reflect creativity and practicality. A good design balances beauty and use, making BBQ Essentials visually appealing and highly effective.

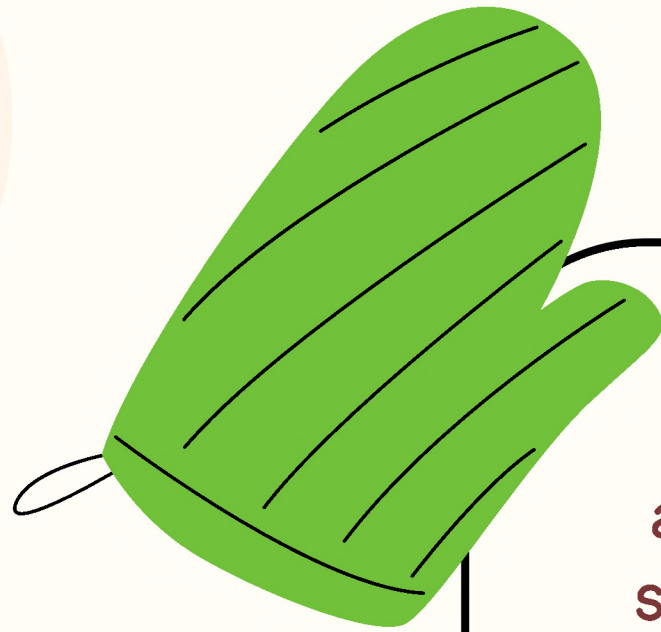
Cultural Significance

The cultural significance of BBQ Essentials is vast. In many societies, they are associated with rituals, gatherings, or lifestyle habits. This cultural layer adds depth and value, making BBQ Essentials not just objects but meaningful parts of human interaction.

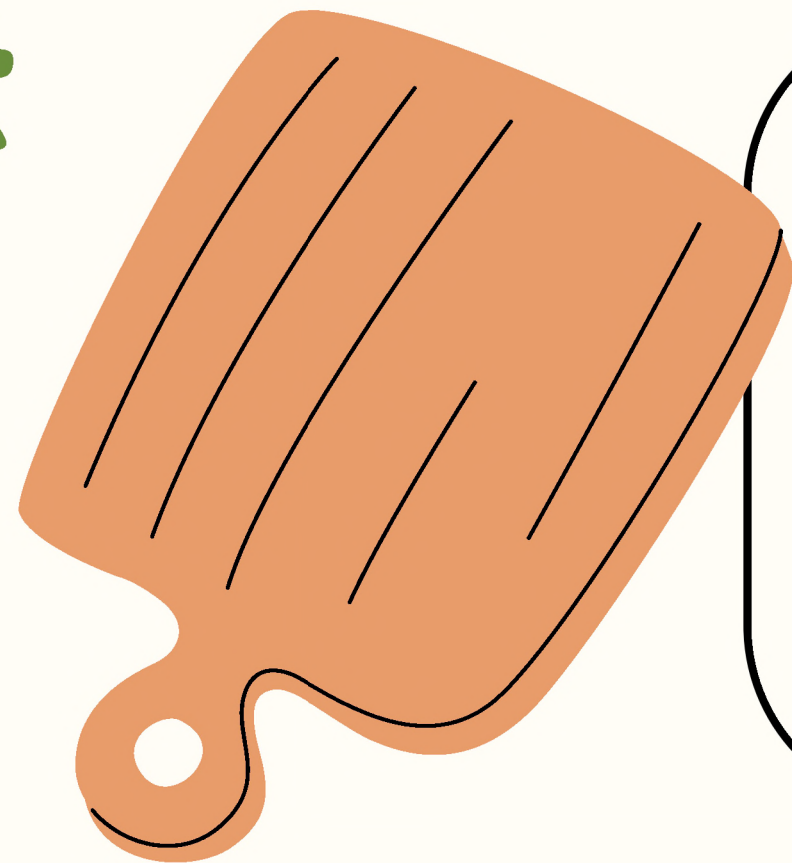
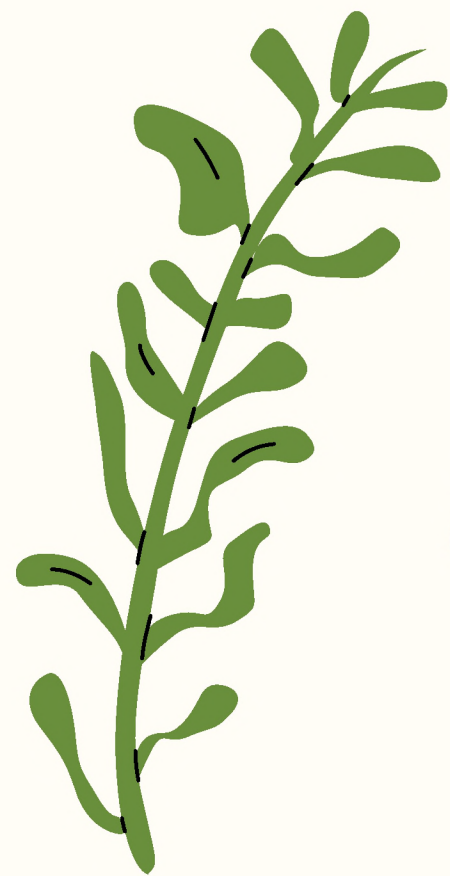


Modern Adaptations

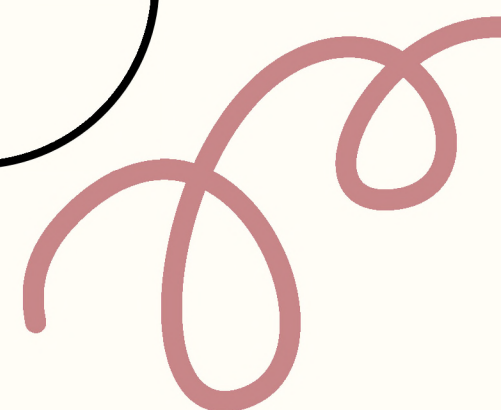
Modern lifestyles have influenced the design and function of BBQ Essentials. New materials, sleek styles, and innovative features make them adaptable for today's fast-paced living. These adaptations ensure that BBQ Essentials remain relevant in our daily routines.



Sustainability and Awareness



Sustainability has become vital in designing and using BBQ Essentials. Eco-friendly choices, recyclable materials, and conscious production are transforming them into sustainable options. This approach ensures they continue serving us while protecting the planet.



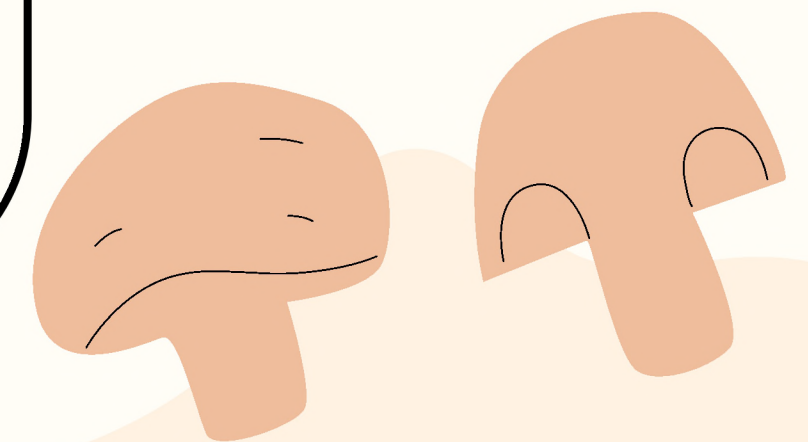
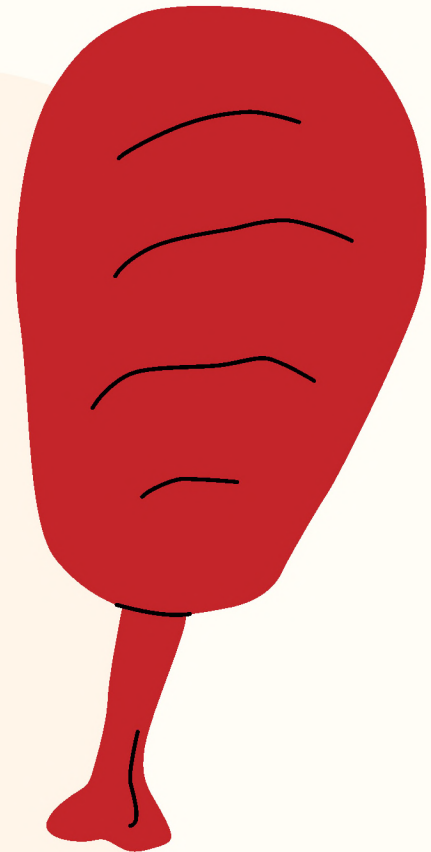
Everyday Utility

In everyday life, BBQ Essentials offer comfort, efficiency, and reliability. Their usability makes them essential in homes, workspaces, and social settings. Their familiarity and ease of use make BBQ Essentials indispensable companions to our routines.

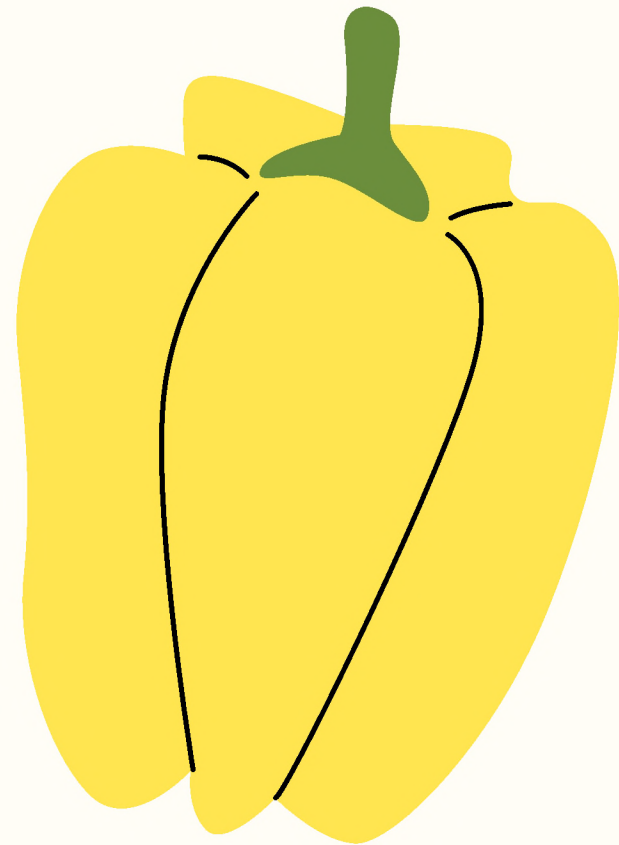
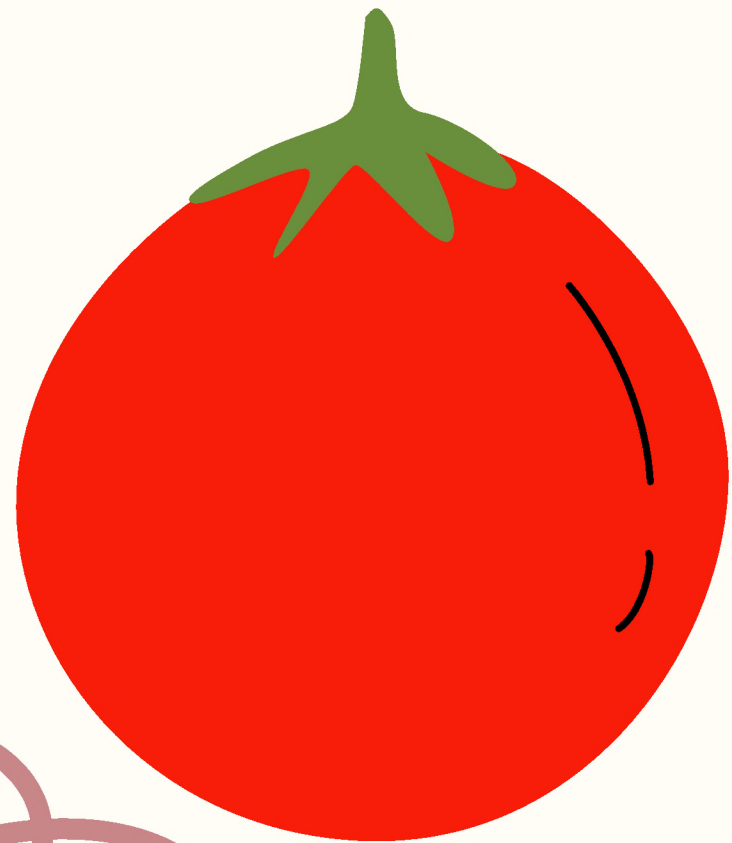
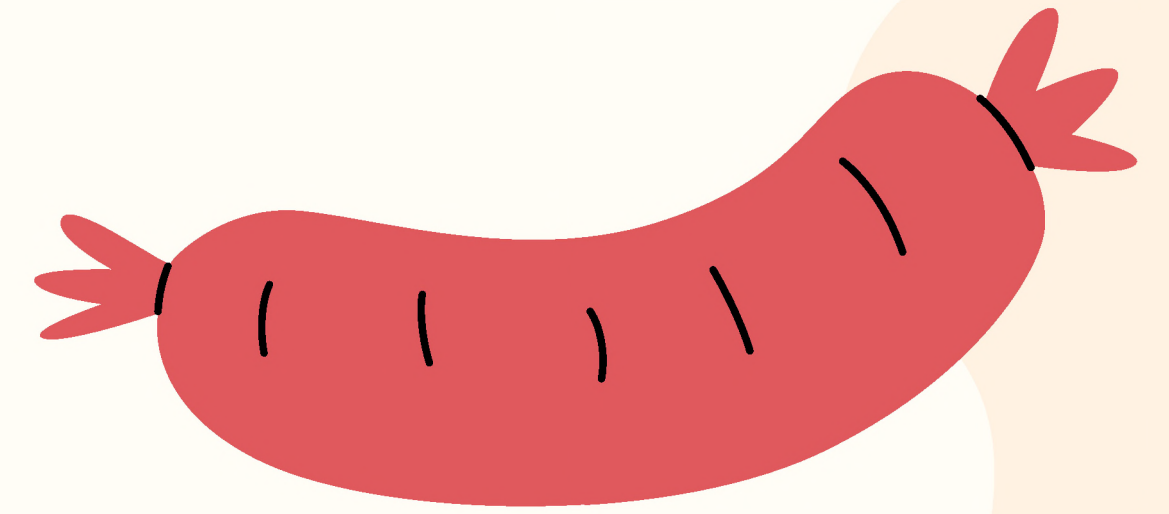


Future Possibilities

The future of BBQ Essentials lies in innovation. Smarter, more sustainable, and design-forward versions will shape their role in society. With evolving technology and trends, BBQ Essentials will keep blending practicality with creativity.



Conclusion



By appreciating BBQ Essentials, we celebrate the blend of function, design, and culture. They may seem ordinary, but their impact is extraordinary. Whether traditional or modern, BBQ Essentials remind us how everyday items shape our experiences and lifestyles.